

## ***Air & Gas Industries***

A Unit of Air & Gas Holdings Pty Ltd

ABN 14 213 772 690

## **2009 EQUIPMENT CATALOGUE**

***Air & Gas Industries is based in Brisbane,  
Queensland & offers its services throughout  
Australia and the Asia Pacific Region.***

***Air & Gas Industries was established in 1974  
and has established a unique position in the  
market place in:***

- Contracting, Service & Maintenance
  - LPGas Engineering
  - Industrial Combustion
  - Fabricated Products
- Merchandising, Inspection & Testing
  - Specialised Transport Equipment
- Providing equipment to the Agricultural industry

***19 Industrial Avenue  
Wacol Qld 4076  
Phone: 07 3271 5899  
Fax: 07 3271 5726  
Email: mail@airgas.com.au***

**Please contact our Sales Department for pricing or orders on 07 3271 5899  
or alternatively**

**Troy Stone : 0411 476 923  
Wayne Ball: 0413 614 611**

## INDEX

	<b>Page.</b>
<b>Acme Adaptors</b>	<b>6,8</b>
<b>Acme Couplings</b>	<b>6,8</b>
<b>Acme Caps &amp; Gaskets</b>	<b>7</b>
<b>Ball Valves</b>	<b>3</b>
<b>Breakaway Hose</b>	<b>7</b>
<b>Bushes</b>	<b>11</b>
<b>Cable Ties</b>	<b>18</b>
<b>Cathodic Protection</b>	<b>13</b>
<b>Clamps, Tags</b>	<b>5</b>
<b>Combustion</b>	<b>24,25</b>
<b>Decals</b>	<b>18</b>
<b>Dust Caps</b>	<b>18</b>
<b>Elbows</b>	<b>9</b>
<b>Filler Hose Adaptors</b>	<b>6</b>
<b>Flanges</b>	<b>11</b>
<b>Full Couplings / Sockets</b>	<b>10</b>
<b>Gaskets</b>	<b>12</b>
<b>Gauges</b>	<b>15</b>
<b>Hydrives</b>	<b>26</b>
<b>Hoses</b>	<b>4,5</b>
<b>Hose Reels</b>	<b>29</b>
<b>Light Fittings</b>	<b>31</b>
<b>Nipples</b>	<b>9</b>
<b>Pumps &amp; Compressors</b>	<b>26</b>
<b>Quick Acting Cylinder Filling Nozzles</b>	<b>23</b>
<b>Reducers</b>	<b>9</b>
<b>Safety Couplings</b>	<b>7</b>
<b>Safety Equipment</b>	<b>30</b>
<b>Scales</b>	<b>22</b>
<b>Stability Sensors</b>	<b>23</b>
<b>Steel Tube</b>	<b>14</b>
<b>Swage Lok</b>	<b>14</b>
<b>Tees</b>	<b>10</b>
<b>Unions</b>	<b>10</b>
<b>Valves</b>	<b>16,17</b>
<b>Vapourisers</b>	<b>27</b>
<b>Wireless Controls</b>	<b>19-21</b>

# BALL VALVES

## FLANGED BALL VALVES

Brands Available – Kitz Mars Wooster Richards

STOCK DESCRIPTION	PART NO.
<b>150lb</b>	
20mm Mars s/s 90 series F/S F/B	90D-1F20
50mm Mars s/s 90 series F/S F/B – Actuated	90D-1F50-C-092SR12
<b>300lb</b>	
20mm Mars s/s 90 series F/S Full Bore	90D-2F20
20mm mars s/s 90 series F/S F/B – Actuated	90D-2F20-C-063SR
25mm Mars s/s 90 series F/S Full Bore	90D-2F25
25mm Mars s/s 90 series F/S F/B – Actuated	90D-2F25-C-075SR12
40mm Mars s/s 90 series F/S Full Bore	90D-2F40
40mm Mars s/s 90 series F/S F/B – Actuated	90D-2F40-C-092SR
50mm Mars s/s 90 series F/S Full Bore	90D-2F50
50mm Mars s/s 90 series F/S F/B – Actuated	90D-2F50-C-092SR12
80mm Mars s/s 90 series F/S Full Bore	90D-2F.80
80mm Mars s/s 90 series F/S F/B – Actuated	90D2F80C105DA



## SCREWED BALL VALVES

Brands Available – Mars Emico

STOCK DESCRIPTION	PART NO.	STAINLESS STEEL
<b>Manual</b>		
15mm NPT Mars s/s 3 pce F/S		83F-1115
20mm NPT Mars s/s 3pce F/S		83F-1120
25mm NPT Mars s/s 3 pce F/S		83F-1125
32mm NPT Mars s/s 3pce RB F/S		83F-11R
50mm NPT Mars s/s 3 pce F/S		83F-1150
40mm NPT Mars s/s 3 pce F/S		83F-1140
20mm NPT Mars s/s 3 pce F/S		88F-11-020
	<b>CAST IRON</b>	
15mm 3 piece Ball Valve F/S	EA305CSE-15	EA305ASE-15
20mm 3 piece Ball Valve F/S	EA305CSE-20	EA305ASE-20
25mm 3 piece Ball Valve F/S	EA305CSE-25	EA305ASE-25
32mm 3 piece Ball Valve F/S	EA305CSE-32	EA305ASE-32
40mm 3 piece Ball Valve F/S	EA305CSE-40	EA305ASE-40
50mm 3 piece Ball Valve F/S	EA305CSE-50	EA305ASE-50
<b>Actuated</b>		
15mm NPT Mars s/s 3 pce F/S Actuated		88F-1115-C-052SR
20mm NPT Mars s/s 3 pce F/S Actuated		88F-1120-C-052SR
25mm NPT Mars s/s 3 pce F/S Actuated		88F-1125-C-052SR
32mm NPT Mars s/s 3 pce F/ Actuated		88F-1132-C-052SR
40mm NPT Mars s/s 3 pce FS Actuated		88F-1140-C-052SR
50mm NPT Mars s/s 3 pce F/S Actuated		88F-1150-C-052SR

## HOSES

STOCK DESCRIPTION	PART NO.
Hose Assy LPG 1" x 15m $\frac{3}{4}$ " MNPT	SA100
Hose Assy LPG 1" x 25m 1" MNPT	SA101
Hose Assy LPG 1" x 3.5m 1" MNPT	SA102
Hose Assy LPG 1" x 30m 1" MNPT	SA103
Hose Assy LPG 1" x 5m 1" MNPT	SA104
Hose Assy LPG 1" x 6.4m 1" MNPT	SA105
Hose Assy LPG $\frac{1}{2}$ " x 1.4m $\frac{1}{2}$ " MNPT	SA106
Hose Assy LPG $\frac{1}{2}$ " x 1.5m $\frac{1}{2}$ " MNPT	SA107
Hose Assy LPG $\frac{1}{2}$ " x 1.5m $\frac{3}{4}$ " MNPT	SA108
Hose Assy LPG $\frac{1}{2}$ " x 5.3m $\frac{3}{4}$ " MNPT	SA109
Hose Assy LPG $\frac{1}{4}$ " x 1.5m $\frac{1}{4}$ " MB SP $\frac{1}{4}$ " Fswivel	SA110
Hose Assy LPG 1 $\frac{1}{4}$ " x 3m 1 $\frac{1}{4}$ " MNPT	SA111
Hose Assy LPG 1 $\frac{1}{4}$ " x 4m 1 $\frac{1}{4}$ " MNPT	SA112
Hose Assy LPG 1 $\frac{1}{4}$ " x 5m 1 $\frac{1}{4}$ " MNPT	SA113
Hose Assy LPG 2" x 2m 2" MNPT	SA114
Hose Assy LPG 2" x 4m 2" MNPT	SA115
Hose Assy LPG 2" x 5m 2" MNPT	SA116
Hose Assy LPG 2" x 6m 2" MNPT	SA117
Hose Assy LPG $\frac{3}{4}$ " x 4m $\frac{3}{4}$ " MNPT	SA118
Hose Assy LPG $\frac{3}{4}$ " x 7m $\frac{3}{4}$ " MNPT	SA119
Hose Assy LPG $\frac{3}{4}$ " x 1m $\frac{1}{2}$ " MNPT	SA120
Hose Assy LPG $\frac{3}{4}$ " x 2.5m $\frac{1}{2}$ " MNPT	SA121
Hose Assy LPG $\frac{3}{4}$ " x 2m $\frac{3}{4}$ " MNPT	SA122
Hose Assy LPG $\frac{3}{4}$ " x 36m $\frac{3}{4}$ " MNPT	SA123
Hose Assy LPG $\frac{3}{4}$ " x 38m $\frac{3}{4}$ " MNPT	SA124
Hose Assy LPG $\frac{3}{4}$ " x 3m $\frac{3}{4}$ " MNPT	SA125
Hose Assy LPG $\frac{3}{4}$ " x 40m $\frac{3}{4}$ " MNPT	SA126
Hose Assy LPG $\frac{3}{4}$ " x 45.7m $\frac{3}{4}$ " MNPT	SA127
Hose Assy LPG $\frac{3}{8}$ " x .8m $\frac{1}{4}$ " MNPT	SA128
Hose Assy LPG $\frac{3}{8}$ " x 1.5m $\frac{3}{8}$ " MNPT	SA129

**All hoses come complete with crimped ends, tested and certified.**

**\* Stainless Steel Braided Hoses also available.**



## ANHYDROUS AMMONIA HOSE

### LOW PRESSURE HOSE

STOCK DESCRIPTION	PART NO.
Hose NH3 3/8"	GAF010
Hose NH3 1/2"	GAF012
Hose NH3 5/8"	GAF016
Hose NH3 3/4"	GAF020
Hose NH3 1"	GAF025

### HIGH PRESSURE HOSE

STOCK DESCRIPTION	PART NO.
Hose NH3 3/4"	GAA020
Hose NH3 1"	GAA025
Hose NH3 1 1/4"	GAA032
Hose NH3 1 1/4" S/S Braid	GAS032
Hose NH3 2" S/S Braid	GAS061

### HIGH TAGS

STOCK DESCRIPTION	PART NO.
Hose Tag 3/4"	AG-0638-00
Hose Tag 1"	AG-0639-00
Hose Tag 1 1/4"	AG-0640-00
Hose Tag 2"	AG-0641-00



### LOW PRESSURE HOSE CLAMPS

STOCK DESCRIPTION	PART NO.
Hose Clamp 8-22mm	MH006P
Hose Clamp 14-27mm	HS010P
Hose Clamp 14-32mm	HS012P
Hose Clamp 17-38mm	HS016P



### BRASS ACME ADAPTORS

STOCK DESCRIPTION	PART NO.
1 3/4" MALE Acme x 1/4" FNPT	5764A
1 3/4" MALE Acme x 1/2" FNPT	5764C
1 3/4" MALE Acme x 3/4" FNPT	5764D
2 1/4" MALE Acme x 1" FNPT	5766E
3 1/4" MALE Acme x 2" FNPT	5768H
1 1/4" MALE Acme x 3/4" MNPT	5763D
1 3/4" MALE Acme x 3/4" MNPT	5765D
1 3/4" MALE Acme x 1" MNPT	5765E
2 1/4" MALE Acme x 1 1/4" MNPT	5767F
2 1/4" MALE Acme x 2" MNPT	5767H
2 1/4" MALE / MALE Acme x 2 1/4" Hex	5767M
3 1/4" MALE Acme x 2" MNPT	5769H
3 1/4" MALE Acme x 3" MNPT	5769K
3 1/4" MALE / MALE Acme x 3 1/4" Hex	5769M



### BRASS ACME COUPLINGS

STOCK DESCRIPTION	PART NO.
<b>Short Type</b>	
1 3/4" FEMALE Acme x 1/2" MNPT	3175B
1 3/4" FEMALE Acme x 1" MNPT	3175A
2 1/4" FEMALE Acme x 1 1/4" MNPT	3185
3 1/4" FEMALE Acme x 2" MNPT (Brass Nut & Steel Nipple)	3195
1 3/4" FEMALE Acme x 1" MNPT	3181A
<b>Extended Type</b>	
1 3/4" FEMALE Acme x 1" MNPT (Liquid)	A7575L4



### FILLER HOSE ADAPTORS

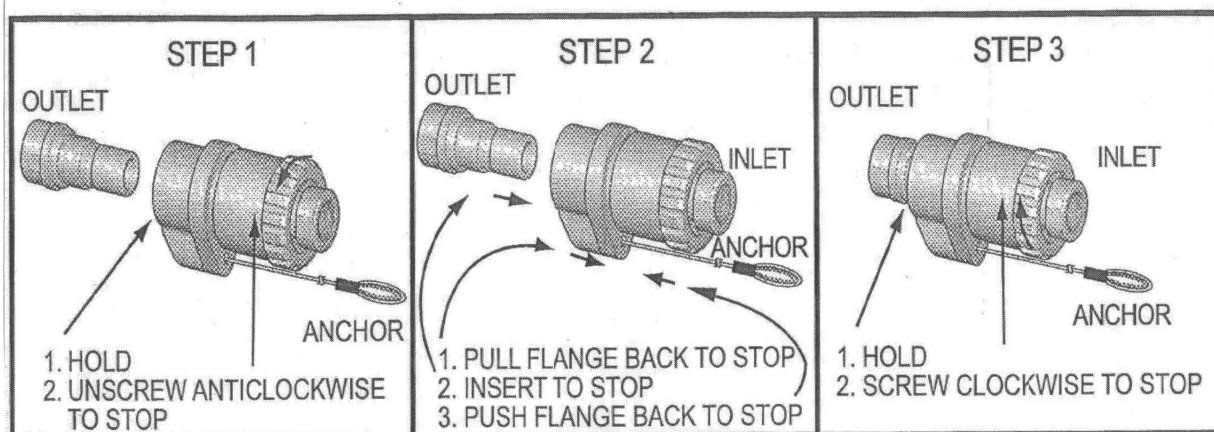
STOCK DESCRIPTION	PART NO.
1 3/4" FEMALE Acme (Filler Valve Connection) x 1 3/4" MALE Acme (Hose Connection)	7577V

## BREAKAWAY – HOSE

STOCK DESCRIPTION	PART NO.
BREAKAWAY HOSE	870-010-01

### HOSE BREAKAWAY COUPLING RECONNECTION INSTRUCTIONS

**WARNING:** TO MAINTAIN SATISFACTORY OPERATION THIS COUPLING SHOULD BE REGULARLY SEPARATED, EXAMINED FOR CORROSION, CLEANED, GREASED, AND RECONNECTED.



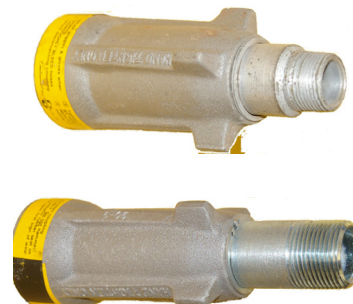
## ACME CAPS AND GASKETS

STOCK DESCRIPTION	PART NO.
3 1/4" ACME CAP w/ CHAIN (STEEL)	A-545-C
2 1/4" ACME CAP w/ CHAIN (STEEL)	A-535-C
1 3/4" ACME CAP w/ CHAIN (STEEL)	A-529-C
1 3/4" ACME CAP w/ CHAIN (NYLON)	22-63FC
GASKET 1 1/4" ACME	22-71-F
GASKET 2 1/4" ACME	A-532-2
GASKET 3 1/4" ACME	A-540-2
GASKETS CONTENTS GAUGE SNR NEOPRENE	R-0015-00004



## CONTINENTAL SAFETY COUPLINGS

STOCK DESCRIPTION	PART NO.
ACME SAFETY COUPLING 3/4" MNPT	A-571
ACME SAFETY COUPLING 1" MNPT	A-577-B





## STEEL ACME ADAPTORS

STOCK DESCRIPTION	PART NO.
1 3/4" Male Acme to 3/4" Male NPT	A-524
1 3/4" Male Acme to 1" Male NPT	A-524-B
1 3/4" Male Acme to 1 1/4" Male NPT	A-524-C
Adaptor & Plug 1 3/4" Male Acme	A-524-WB
2 1/4" Male Acme to 1 1/4" Male NPT	A-532
2 1/4" Male Acme to 2" Male NPT	A-534
3 1/4" Male Acme to 2" Male NPT	A-540
3 1/4" Male Acme to 3" Male NPT	A-542
1 3/4" Male Acme to 3/4" Female NPT	A-525
1 3/4" Male Acme to 3/8" Female NPT	A-525-A
1 3/4" Male Acme to 1" Female NPT	A-525-B
3 1/4" Male Acme to 2" Female NPT	A-544
1 3/4" Male Acme to 1/2" Male NPT	A-524-A
2 1/4" Female Acme to 1 3/4" Male Acme	A-582
1 3/4" Male Acme to 1 3/4" Male Acme	A-520



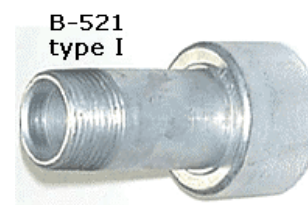
**A-524  
type I**



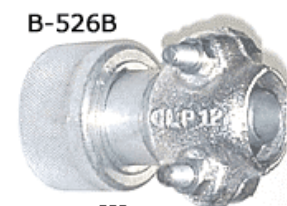
**A-525  
type II**

## STEEL ACME COUPLINGS

STOCK DESCRIPTION	PART NO.
<b>Type I</b>	
1 3/4" Female Acme Coupling to 1/2" Male NPT	B-523
1 3/4" Female Acme Coupling to 3/4" Male NPT	B-521
1 3/4" Female Acme Coupling to 1" Male NPT	B-521-B
1 3/4" Female Acme Coupling to 1" MNPT 6" long	B-521BS
1 3/4" Female Acme Coupling to 1 1/4" MNPT	A-527
1 3/4" Female Acme Coupling to 2" MNPT	A-551
<b>Type II</b>	
1 3/4" Female Acme Coupling x 1/2" FNPT	A-1101
1 3/4" Female Acme Coupling to 3/4" FNPT	B-522
1 3/4" Female Acme Coupling to 1" FNPT	B-522-B
<b>Type III</b>	
1 3/4" Female Acme Coupling x 1/2" Hose	B-526-B
1 3/4" Female Acme Coupling to 1/2" Hose	B-526-CL
1 3/4" Female Acme Coupling to 1" Hose	B-526-ACL
1 3/4" Female Acme Coupling to 1 1/4" Hose	B-526C-CL
2 1/4" Female Acme Coupling to 1 1/4" Hose	A-528-CL
3 1/4" Female Acme Coupling to 2" Hose	A-552-CL
1 3/4" Female Acme Coupling to 1 3/4" Male NPT	A-580
2 1/4" Female Acme Coupling to 1 3/4" Male NPT	A-582
3 1/4" Female Acme Coupling to 1 3/4" Male NPT	A-584



**B-521  
type I**



**B-526B**

**type III**



## STEEL FITTINGS

\* ITEMS ALSO AVAILABLE IN STAINLESS STEEL

### ELBOWS 3000lb

STOCK DESCRIPTION	PART NO.
1/4" NPT Male to Female Elbow	08MFE
3/8" NPT Male to Female Elbow	10MFE
1/2" NPT Male to Female Elbow	15MFE
3/4" NPT Male to Female Elbow	20MFE
1.0" NPT Male to Female Elbow	25MFE
1 1/4" NPT Male to Female Elbow	32MFE
2" NPT Male to Female Elbow	50MFE
1/4" NPT Female to Female Elbow	06E
3/8" NPT Female to Female Elbow	10E
1/2" NPT Female to Female Elbow	15E
3/4" NPT Female to Female Elbow	20E
3/4" NPT Female to Female 45 deg Elbow	20E45
1.0" NPT Female to Female Elbow	25E
1 1/4" NPT Female to Female Elbow	32E
2" NPT Female to Female Elbow	50E
2" NPT Female to Female 45 deg Elbow	50E45



### NIPPLES 3000lb

1/8" Hex Nipple	06HN
1/4" Hex Nipple	08HN
3/8" Hex Nipple	10HN
1/2" NPT Hex Nipple	15HN
3/4" NPT Hex Nipple	20HN
1.0" NPT Hex Nipple	25HN
1 1/4" NPT Hex Nipple	32HN
2" Hex Nipple	50HN



### REDUCING NIPPLES 3000lb

1/4" x 1/8" Hex Nipple	08.06HN
3/8" x 1/8" Hex Nipple	10.03HN
3/8" x 1/4" Hex Nipple	10.06HN
1/2" x 1/4" Hex Nipple	15.06HN
3/4" x 1/4" Hex Nipple	20.08HN
3/4" x 3/8" Hex Nipple	20.10HN
3/4" x 1/2" Hex Nipple	20.15HN
1" x 3/8" Hex Nipple	25.10HN
1" x 1/2" Hex Nipple	25.15HN
1" x 3/4" Hex Nipple	25.20HN
1 1/4" x 3/4" Hex Nipple	32.20HN
1 1/4" x 1" Hex Nipple	32.25HN
1 1/2" x 1 1/4" Hex Nipple	40.32HN
2" x 1" Hex Nipple	50.25HN
2" x 1 1/4" Hex Nipple	50.32HN
2" x 1 1/2" Hex Nipple	50.40HN
3" x 2" Hex Nipple	80.50HN



**TEES 3000lb**

1/4" Female Tee	08T
3/8" Female Tee	10T
1/2" NPT Female Tee	15T
3/4" NPT Female Tee	20T
1" NPT Female Tee	25T
1 1/4" Female Tee	32T
2" Female Tee	50T


**SOCKETS / FULL COUPLINGS 3000lb**

1/4" Full Coupling	08FC
3/8" Full Coupling	10FC
1/2" Full Coupling	15FC
3/4" Full Coupling	20FC
1" Full Coupling	25FC
1 1/4" 3000 psi Full Coupling	32FC
2" Full Coupling	50FC


**PLUGS 3000lb**

STOCK DESCRIPTION	PART NO.
1/8" NPT	06HHP
1/4" NPT Plug	08HHP
3/8" NPT Plug	10HHP
1/2" NPT Plug	15HHP
3/4" NPT Plug	20HHP
1" NPT Plug	25HHP
1 1/4" NPT Plug	32HHP
2" NPT Plug	50HHP


**UNIONS 3000lb**

1/2" Union	15U
20mm Union	20U
25mm Union	25U
32mm Union	32U
40mm Union	40U
50mm Union	50U



**BUSHES 3000lb**

STOCK DESCRIPTION	PART NO.
1/4" x 1/8" NPT Bush	06.03B
3/8" x 1/8" NPT Bush	10.06B
1/2" x 1/8" NPT Bush	15.06B
1" x 1/8" NPT Bush	25.06B
1" x 1/4" NPT Bush	25.08B
1" x 1/2" NPT Bush	25.15B
1" x 3/4" NPT Bush	25.20B
1 1/4" x 1/2" NPT Bush	32.15B
1 1/4" x 3/4" NPT Bush	32.20B
1 1/4" x 1" NPT Bush	32.25B
1 1/2" x 1" NPT Bush	40.25B
2" x 1" NPT Bush	50.25B


**FLANGES 3000lb**

STOCK DESCRIPTION	PART NO.
Flange Blind 15mm	15.300B
Flange Blind 20mm	20.300B
Flange Blind 25mm	25.300B
Flange Blind 32mm	32.300B
Flange Blind 40mm	40.300B
Flange Blind 50mm	50.300B
Flange Blind 80mm	80.300B
Flange Screwed 15mm	15.300.SCD
Flange Screwed 20mm	20.300.SCD
Flange Screwed 25mm	25.300SCD
Flange Screwed 32mm	32.300SCD
Flange Screwed 40mm	40.300SCD
Flange Screwed 50mm	50.300SCD
Flange Screwed 80mm	80.300SCD
Flange RFSO 15mm	15.300.SO
Flange RFSO 20mm	20.300.SO
Flange RFSO 25mm	25.300.SO
Flange RFSO 32mm	32.300.SO
Flange RFSO 40mm	40.300.SO
Flange RFSO 50mm	50.300.SO
Flange RFSO 80mm	80.300.SO
Flange Weldneck 15mm	15.300.WN
Flange Weldneck 20mm	20.300.WN
Flange Weldneck 25mm	25.300.WN
Flange Weldneck 32mm	32.300.WN
Flange Weldneck 40mm	40.300.WN
Flange Weldneck 50mm	50.300.WN
Flange Weldneck 80mm	80.300.WN



## GASKETS

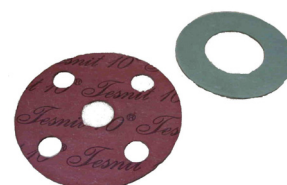
### SPIRAL WOUND GASKETS 3000 lb RATING

STOCK DESCRIPTION	CARBON STEEL	STAINLESS STEEL
Gasket Spiral Wound 15mm	15.300FXC	15.300FXCSS
Gasket Spiral Wound 20mm	20.300FXC	20.300FXCSS
Gasket Spiral Wound 25mm	25.300FXC	25.300FXCSS
Gasket Spiral Wound 32mm	32.300FXC	32.300FXCSS
Gasket Spiral Wound 40mm	40.300FXC	40.300FXCSS
Gasket Spiral Wound 50mm	50.300FXC	50.300FXCSS
Gasket Spiral Wound 65mm	65.300FXC	65.300FXCSS
Gasket Spiral Wound 80mm	80.300FXC	80.300FXCSS
Gasket Spiral Wound 100mm	100.300FXC	100.300FXCSS
Gasket Spiral Wound 150mm	150.300FXC	150.300FXCSS



### COMPRESSED FIBRE 3000lb RATING

STOCK DESCRIPTION	1.5mm THICK	3mm THICK
Gasket Compressed Fibre 20mm	20.300NAF1.5	200.300NAF3
Gasket Compressed Fibre 25mm	25.300NAF1.5	25.300NAF3
Gasket Compressed Fibre 32mm	32.300NAF1.5	32.300NAF3
Gasket Compressed Fibre 40mm	40.300NAF1.5	40.300NAF3
Gasket Compressed Fibre 50mm	50.300NAF1.5	50.300NAF3
Gasket Compressed Fibre 65mm	65.300NAF1.5	65.300NAF3
Gasket Compressed Fibre 80mm	80.300NAF1.5	80.300NAF3
Gasket Compressed Fibre 100mm	100.300NAF1.5	100.300NAF3



### GASKETS FOR SITE FLOW INDICATORS

STOCK DESCRIPTION	PART NO.
80mm OD x 63mm ID x 1mm	AG-1604-00
95mm OD x 72mm ID x 1mm	AG-1605-00

### REGO DUO-PORT RELIEF VALVE

STOCK DESCRIPTION	PART NO.
Gasket Duoport	7560-32T
Gasket Duoport	A8540-3T

### FISHER INTERNAL VALVES

STOCK DESCRIPTION	PART NO.
Gasket Upper C404 ISC	IP8777
Gasket Lower C404 ISC	IP8776

### ROCHESTER

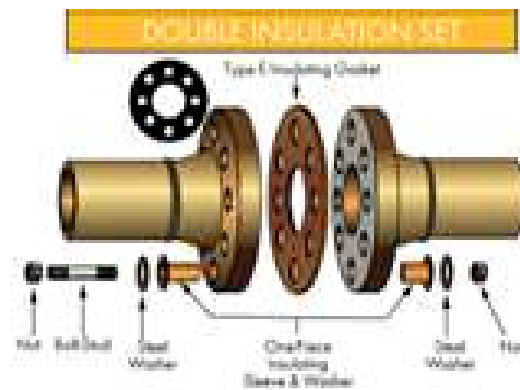
STOCK DESCRIPTION	PART NO.
Gasket Contents Gauge SNR Neoprene	R-0015-00004

## YORK

STOCK DESCRIPTION	PART NO.
Seal Kit York Compressor	IPL0562

## CATHODIC PROTECTION (INSULATION GASKETS) – 3000lb

STOCK DESCRIPTION	PART NO.
CP Gasket Kit 15mm	15.300CP
CP Gasket Kit 20mm	20.300CP
CP Gasket Kit 25mm	25.300CP
CP Gasket Kit 32mm	32.300CP
CP Gasket Kit 40mm	40.300CP
CP Gasket Kit 50mm	50.300CP
CP Gasket Kit 65mm	65.300CP
CP Gasket Kit 80mm	80.300CP



## STEEL TUBING & SWAGE LOK FITTINGS

6mm (1/4") 316ss Tube	316.06SA
10mm (3/8") 316ss Smls Anl Tube	316.10SA
15mm (1/2") 316ss Smls Anl Tube	316.15SA
20mm (3/4") 316ss Smls Anl Tube	316.20SA
25mm (1") 316ss Smls Anl Tube	316.25SA
40mm 316ssSmls Anl Tube	316.40SA



Fig.1 Elbow Tube to M.I.



Fig.2 Elbow Tube to Tube



Fig.3 Tube to Tube Reducer



Fig.4 Tube to Tube Tee



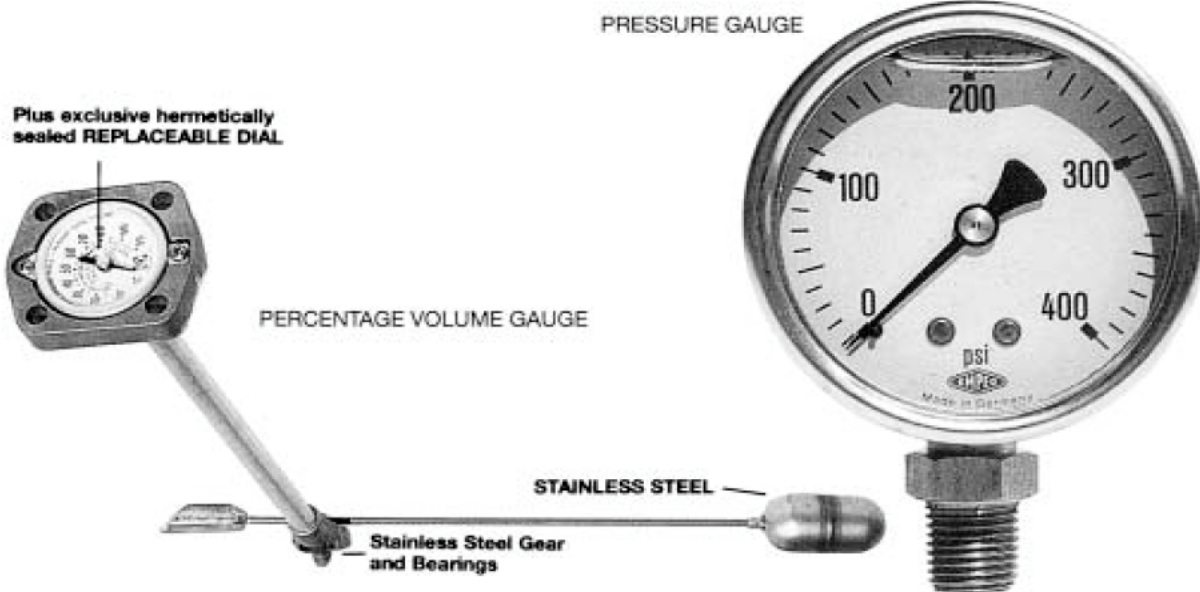
Fig. 5 Straight Tube to Tube M.I.



Fig. 5 Straight Tube to Tube

## CONTENTS GAUGES

STOCK DESCRIPTION	PART NO.
Gasket % Volume Gauge	15-4
Dial % Volume Gauge	5-2
Side Reading % volume Gauge Dial	5058500617
Screws (Large) for Gauge	40-415
Screws (Small) for Dial	40-416



STOCK DESCRIPTION	PART NO.
Gauge 63mm 0-100 kpa L/F ¼ BST	530.9312689.10
Gauge 63mm 0-250 kpa ¼ BST	530.9312701.10
Gauge 63mm 0-400 kpa ¼ BST	530.9312719.10
Gauge 63mm L/F 0-2500 kpa ¼ BST	530.8349660.10
Gauge 63mm 0/2500 B/E ¼ NPT Safety Pattern s/s	530.7731087.10
Gauge 100mm L/F 0-2500 kpa 3/8 BSPT	500.9683345.10
Gauge 63mm L/F s/s 2500 kpa RE	505.7285276.20
Gauge 50mm x 400 kpa LM 14BST	1611150
Gauge 63mm x 600 kpa LM ¼" Liquid	1614050
Gauge 63mm x 800 kpa LF BE	1614100
Gauge 63mm x 1000 kpa LM Liquid	1614150
Gauge 63mm x 1600 kpa	1614200



## VALVES

STOCK DESCRIPTION	PART NO.
Angle Valve 1.00" Male NPT	A-4581
Angle Valve ¾" Male NPT	A-1275
Bleeder Valve ¼" NPT s/s	A-411
Combination Fill and Withdrawal Valve ¼" Male NPT to 1.0" Female NPT and 1 ¾" Male Acme Outlets	A-1205
Hydrostatic Pressure Relief Valve ¼" NPT	A-400
Hydrostatic Pressure Relief Valve ¾" NPT	A-402
Needle Valve ¼" NPT	A-1000
Nurse Tank Valve 1 ¼" Male NPT to 1 ¾" Male Acme Outlet	A-1204-C
Nurse Tank Valve 1.0" Female NPT to 1.0" Female NPT Outlet	A-1205-EBP
Liquid Withdrawal Valve	A-1206-EB
Vapour Valve ¾"	A-122-NA
Vapour Valve ¾" with Excess Flow Control	A-123-A
Liquid Withdrawal Valve W/- Bypass	A-1206-FBP
Liquid Withdrawal Valve No Bypass	A-1205-F
Needle Valve ¼" MNPT x ¼" FNPT	A-1000
Needle Valve ¼" M&F NPT	H5RDC-22
Needle Valve ¼" NPT F/F S/S	200N
Needle Valve 3/8" M&F NPT S/S 6000lb	10NVSN



COMBINATION VALVE

NEEDLE VALVE


¼" BLEEDER VALVE  
PRESSURE RELIEF VALVE

¼" HYDROSTATIC  
PRESSURE RELIEF VALVE

¾" HYDROSTATIC

## VALVES

### NURSE TANK VALVE COMBINATIONS



45° ACME  
OUTLET & CAP



90° NPT OUTLET



45° NPT OUTLET



NEEDLE VALVE



STANDARD VAPOUR VALVE



VAPOUR VALVE WITH  
EXCESS FLOW CONTROL

**MISCELLANEOUS**

STOCK DESCRIPTION	PART NO.
Dust Cap	22-63FC
Dust Cap	A-402 N-DC
Plastic Cap – Hydrostatic Valve	323940
Orifice	01-45-2
Hycar Washer	22-71-F
Gasket	532-2
Gasket	540-2
Hand Wheel	20-08

**CABLE TIES**

STOCK DESCRIPTION	PART NO.
Cable Tie 98mm x 2.3mm (pk 100)	AG-3005-00
Cable Tie 140mm x 3.4mm (pk 100)	AG-3006-00
Cable Tie 200mm x 4.8mm (pk 100)	AG-3007-00
Cable Tie 250mm x 4.8mm (pk 100)	AG-3008-00
Cable Tie 290mm x 4.8mm (pk 100)	AG-3009-00
Cable Tie 365mm x 7.8mm (pk 100)	AG-3010-00

**DECALS**

STOCK DESCRIPTION	PART NO.
Transfer Procedure	IPL0257
“Anhydrous Ammonia”	IPL0258
Poison/First Aid Instructions	IPL0259
“Big N” (Large)	IPL0260
“Big N” (Small)	IPL0261
“Hazchem 1005-2RE” (Large)	IPL0264
“Hazchem 1005-2RE” (Small)	IPL0265
“Liquid In”	IPL0267
“Liquid Out”	IPL0266
“Vapour”	IPL0268
85% Bleed Off	IPL0857
“Hazchem UN 2672-2P” Large	IPL0258/S
“Toxic Gas / Corrosive”	IPL0269
“Anhydrous Ammonia Hazchem”	IPL0275
Marker Signs	IPL0579
“Lift when empty”	IPL0703
“Safety Equipment”	IPL0704
Form 67 Big N	IPL1495
“Big N Vessel Inspection”	IPL1516
“Liquid Out” Large	IPL1582
“Emergency Liquid Out” Large	IPL1583
“Liquid In” Large	IPL1584
“Vapour” Large	IPL1585

**LIQUID IN**
**LIQUID OUT**
**VAPOUR**
**85%**  
**FIXED LEVEL**  
**BLEED GAUGE**

# INDUSTRIAL WIRELESS CONTROLS

## WIRELESS REMOTE SHUTDOWN SYSTEM

The Wireless Remote Shutdown System has been designed specifically for Bulk Storage Facilities. The system has been designed to eliminate costly explosion-proof hard-wiring of manual emergency shutdown switches.

Any number of compact transmitter units can be installed within 1000 ft of a small receiver unit. The system is designed to work in conjunction with existing or new plant safety equipment and is easily installed. The ASK100BP system can also be ordered to work with existing truck remote shut-down systems if requested. Transmitter devices are low-voltage, intrinsically safe units suitable for use in Class 1, Div 2, Group "D" hazardous environments. Transmitter batteries will last three-four years and have a test feature for routine checking. Remote stop-switch is rugged, non-sparking cast aluminum and is fully sealed against extreme weather and temperature conditions.

Receiver units are designed to easily interface and trip electrical, pneumatic, nitrogen, or mechanical plant shutoff equipment. Air & Gas Industries can supply actuators for these systems as required. Systems are supplied complete and pre-tested with detailed installation guide and schematics.

### Bulk Plant System



### Technical Information

Frequency of operation	418-914 Mhz (433 Mhz Standard)
Method of transmission	On / Off Keyed
FCC Approval No.	N8K4401B
Normal Operating Range	1000 ft.
Antenna Type	½ Wave Flexible External
Battery Requirements	2 AA
Low Battery Test	Included
Receiver Power Supply	12/24 Volts DC or 115 Volts AC
Receiver Output	10 Amp Dry Contact Relay, Pre-wired Plug-ins
Construction	Non-sparking Aluminium Weatherproof
System Weight	10 lbs

## FHSB RANGER SERIES

The Ranger Series of Industrial Wireless Controls come with standard features including frequency – hopping spread spectrum radio technology and rechargeable batteries. These systems are designed for the most demanding remote control applications.

Safelink (TM) communication between the handheld and receiver unit provides automatic shutdown in the event of signal loss. FHSS technology ensures interference free operation while greatly increasing safety during “latched” remote operations.

Available with up to 12 field programmable channels, the Ranger series incorporates a receiver serial port to allow custom interface to other on-board or control room systems.

The ergonomic design, large buttons, and belt clip make for easy use. A 12v vehicle charger is included with each system, and optional AC wall chargers are available. Handhelds are pre “married” to receivers at the factory and all systems are pre-wired for “plug and play” installation. Field replacement of transmitters is as simple as pushing a button.



## ASK SERIES

The new ASK Series has 5 times the required power (1500 + foot range) and 10 times battery life, (up to 5 years.) Further technology advances allow these systems to work in areas of heavy obstruction and interference.

Intrinsically safe for use in explosive environments, rugged aluminum construction for severe service, and easy to install “plug and play” components.

### Technical Information

Frequency of operation	433.92 Mhz (others available)
Method of transmission	Digitally encrypted
FCC Approval No.	N8K4401B
Normal Operating Range	1500 ft.
Antenna Type	Tuned Helix
Battery Requirements	Common AA
Low Battery Indication	Automatic warning on truck receiver & transmitter
Receiver Power Supply	12/24 Volts DC or 115 Volts AC
Electrical Connections	Power & Ground
Receiver Output	10 amp dry contact relay pre-wired plug-ins.
Construction	Non-sparking aluminium weatherproof

## WIRELESS CONTROLS

STOCK DESCRIPTION	PART NO.
4 Function Tail Gail Lifter System AM Frequency	ASKWB400
2 Function Tail Gail Lifter System AM Frequency	ASKW200-L
3 Function Query System AM Frequency 24v DC	ASKD300-24
1 Function Receiver c/w One Function Trans (ESD)	ASK400F
Transmitter / suit ASK 200/300 AM Remote Shut Down System	ASK300TX
3 Function Query System AM Frequency	ASK300Q
ASK Yellow ESD Transmitter	ASK100BP-TX
1-CH Bulk Plant Loading Rack	ASK100BP-ELR
ASK ESD Receiver 240v C/W Low Battery Relay and Buzzer	ASK100BP-A&G
Leather Case to suit RVC300QTX Base Remote Control	RVCTXLC
Antenna WIP only to suit RVC Antenna	RVC-Antenna-Wip
Antenna Cable for RVC300 Q 40 Foot Long	RVC-40 COAX
Transmitter / suit RVC 200/300 Remote Shutdown System	RVC300TX

## SCALES

STOCK DESCRIPTION	PART NO.
Load Cell Scale Base	AAA-20440
NSC Upgrade Kit AGI Scales	AAA-20570
Power Supply PCB AGI Scales	AAA-20604
Power Supply Repair AGI Scales	AAA-20604-R
Calibration Cover for Scales	AAA-40527
NSC Label for Scale	AAA-40597
Scale Eprom	AAA-60144
Load Cell Repair	AAA-20440-R
Communication Cable	AAA-20425
ACS1004 Power & Control Cable	AAA-20424
Indicator PC Board	AAA-20474R
ACS1004 Key Cap for Alps Switch	AAA-40118
Power supply PCB c/- F/P Enclo & Cables	AAA40432
ACS1004 Foam Pad for Platform	AAA-40440
S1004 Spring locating Nylon Bush	AAA-40466
Front Panel Key Pad	AAA-40579
ACS1004 Overload Disc	AAA-40669
ACS1004 Overload Spring	AAA-40670
Interface	AAA-AS686
Cybil Software incl. Dongle	ASS-CYBIL3FS
Weigh Indicator & Scale Base 500*600 c/w Aluminium Stand	ASS-FS675CA-SYSTEM
Weigh Indicator Scales to suit FS System	ASS-FS670CA
Weigh Indicator Scales	ASS-AS670CA
Scale Indicator Repair	AS670CA-R
Aluminium Scale Frame c/w 9kg Seat	ACS1007
Rotating Filler Gun Support for Fill Safe Scales	ACS1006
Load cell Mounting Foot Plate	ACS1011
Galv Steel 9kg Seat for Decant	ACS1010
ACS4001 Adjust Foot AGI Scales	SNW-FOOT



## QUICK ACTING CYLINDER FILLING NOZZLES

STOCK DESCRIPTION	PART NO.
Cylinder Fill Gun Multi Purpose. C/w Trigger Safety Guard	AGI1116
Cylinder Fill Nozzle Fork Lift. L/w Compact Design c/w Safety Guard	AGI1116FL
Cylinder Fill Nozzle Pol Valve l/w Compact Design. C/s Safety Guard	AGI1116POL
Nozzle – All Purpose Fill Gun	1116-01
Hook – All Purpose AGI Fill Gun	1116-02
Nozzle – Fork Lift Fill Gun	1116-01FL
Valve Seal Retainer	1116-03
Body Nut	1116-04
Nozzle Body	1116-05
Shuttle Safety Guard Assembly	1116-41
Shuttle Rod 316ss	1116-35
Shuttle Valve Button	1116-36
Nose Cone Retaining Screw	1116-39
19mm OD Fill Nozzle Nose Cone	1116-60
Spring for Cyl Fill Head WO T1522/1	R3406/1
7/16 x 15/16 x ¼ Nitrile U Ring	28-11

## 12 & 24 VOLT STABILITY SENSORS

STOCK DESCRIPTION	PART NO.
Stability Sensor 24v Relay	SS0424
Stability Sensor 12v Relay	SS0412



## COMBUSTION

STOCK DESCRIPTION	PART NO.
15mm Short Pattern Inspirator	SPI 15
20mm Short Pattern Inspirator	SPI 20
25mm Short Pattern Inspirator	SPI 25
32mm Short Pattern Inspirator	SPI 32
40mm Short Pattern Inspirator	SPI 40
50mm Short Pattern Inspirator	SPI 50
65mm Short Pattern Inspirator	SPI 65
80mm Short Pattern Inspirator	SPI 80



STOCK DESCRIPTION	PART NO.
15mm FR Nozzle	FR15
20mm FR Nozzle	FR20
25mm FR Nozzle	FR25
32mm FR Nozzle	FR32
40mm FR Nozzle	FR40
50mm FR Nozzle	FR50
65mm FR Nozzle	FR65
80mm FR Nozzle	FR80
100mm FR Nozzle	FR100



STOCK DESCRIPTION	PART NO.
<b>Electronic Control Equipment</b>	
Base for LFL	AGM55



STOCK DESCRIPTION	PART NO.
Gas Burner Control no Purge Time	LFL1.122
Gas Burner Control 30Sec	LFL1.335
Gas Burner Control 60Sec	LFL1.635



STOCK DESCRIPTION	PART NO.
Gas Burner Control c/w Air Proving	LGB21.130
Gas Burner Control c/w Air Proving	LGB21.350
Gas Burner Control c/w Air Proving	LGB21.550
Gas Burner Control up to 300kw	LGB41.258A27



STOCK DESCRIPTION	PART NO.
Industrial UV Detector	QRA10C
Industrial UV Head High c/w lens	QRA10M.C



STOCK DESCRIPTION	PART NO.
UV Detector and Holder	QRA2

STOCK DESCRIPTION	PART NO.
Industrial UV Detector	QRA10C



STOCK DESCRIPTION	PART NO.
UV Detector Self Checking 110v	QRA53
UV Detector Self Checking 240v	QRA53-240
UV Detector Self Checking	QRA53.C17



## PUMPS & COMPRESSORS

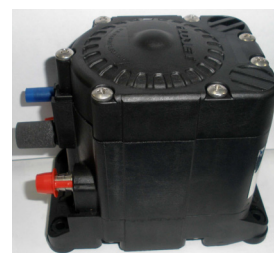
STOCK DESCRIPTION	PART NO.
40mm 1 ½" Blackmer Pump Bare	LGL1.5
2" Blackmer LPG Pump c/w Buttweld Flanges	LGL2E
3" Blackmer Pump c/w Buttweld Flanges	TLGLD3
Blackmer Pump c/w Buttweld Flanges	LGLD4
Blackmer 50mm Truck Pump c/w B/Weld Flanges	TLGLD2
Ebspray Bypass Valve 25mm	EBSV18
Ebspray 4kw exe motor to suit R10 Pump	R10-M
Ebspray 5.5kw RV18 to suit R10 Pump	R105.5KWRV18
25mm Blackmer Bypass Valve	BV1
32mm Blackmer Bypass Valve	BV1.25
40mm Blackmer Bypass Valve	BV1.5
50mm Blackmer Bypass Valve	BV2

LB Compressor



LGL Pumps

STOCK DESCRIPTION	PART NO.
Turret Sump Pump	G58-1022
Turret Sump Pump (complete with ES Control System)	G58-1022/AIR



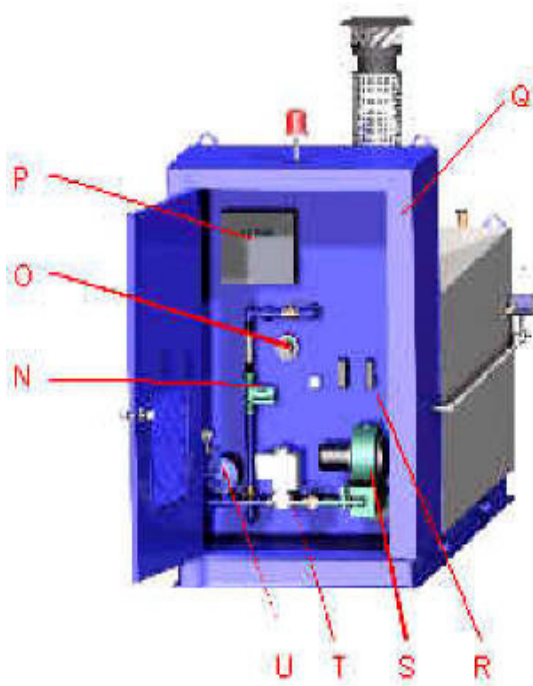
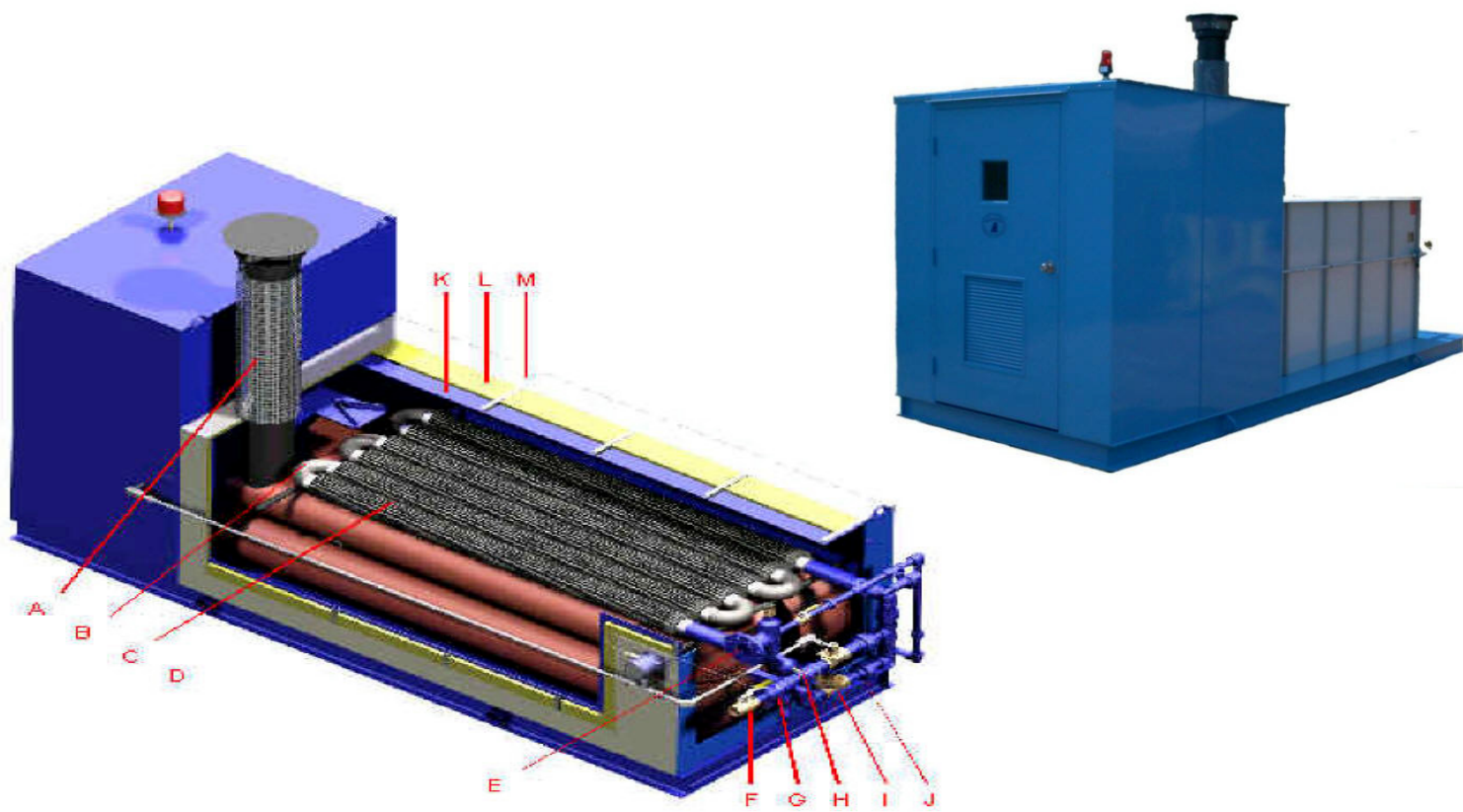
## HYDRIVES

STOCK DESCRIPTION	PART NO.
Blackmer Hydrive 2010 Standard	ACC512823
Blackmer Hydrive Filler Cap	219809
Blackmer Filter Hydrive 2010	10219815
Blackmer Hydrive Fan Only	10219193



## WATER BATH VAPOURISERS

STOCK DESCRIPTION	PART NO.
Water Bath Vapouriser 400kg/hr Propane	WB200-VAPORISER
Water Bath Vapouriser 500kg/hr Propane	WB250-VAPORISER
Water Bath Vapouriser 700kg/hr Propane	WB350-VAPORISER
Water Bath Vapouriser 910kg/hr Propane	WB550-VAPORISER
Water Bath Vapoursier 3600kg/hr Propane	WB1800
Water Bath Vapouriser 6000kg/hr Propane	WB3000



- A. Exhaust Stack
- B. Vapor Tube
- C. Welded Fins
- D. Burner Tube
- E. Vapor Outlet Header
- F. Liquid Inlet Train
- G. Strainer
- H. Temperature Sensor
- I. Check Valve
- J. Solenoid Valve
- K. Steel Shell
- L. Water Tank Insulation
- M. Outer Sheet Metal Shell
- N. Water Circulation Pump
- O. Controls for Water Level
- P. Vaporizer Control Panel
- Q. QBurner and Control Room Cabinet
- R. Temperature controls
- S. Burner
- T. Electronic Burner Control Module
- U. Pressure Regulator

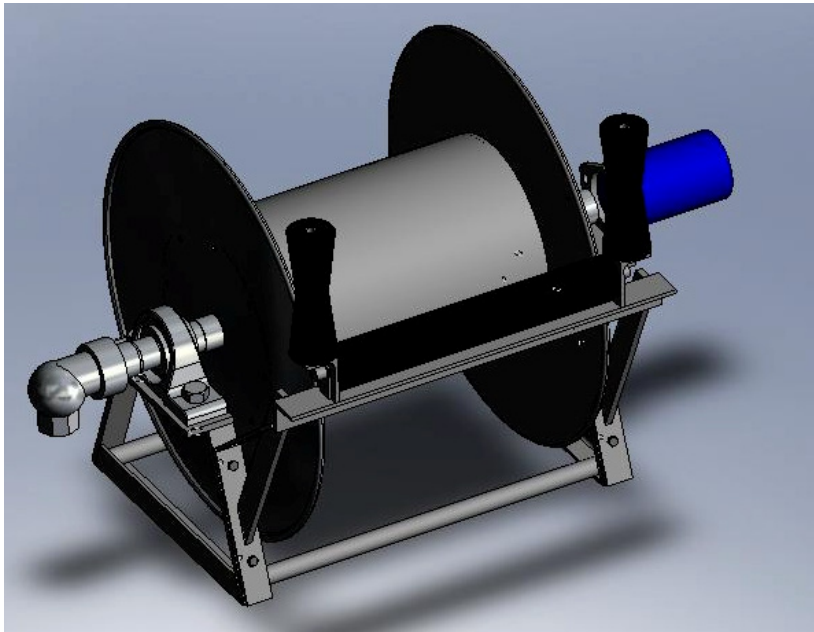
## DIRECT FIRED VAPOURISERS

STOCK DESCRIPTION	PART NO.
40/40 Gas Vapouriser 80kg/hr	40/40
80/40 Gas Vapouriser 160kg/hr	80/40
120/60 Gas Vapouriser 240kg/hr	120/60



## HOSE REELS

STOCK DESCRIPTION	PART NO.
Hose Reel – Bare	HR6655





## SAFETY EQUIPMENT

### MASKS AND GOGGLES

STOCK DESCRIPTION	PART NO.
Goggles – Clear Uvex 9301-626	AG-1187-01
Mask – Full Face Auer 3SE	AG-0252-00
Mask – Full Face North Brand	AG-0252-02
Half mask Sundstrom SR100	AG-0253-00



### FILTERS

STOCK DESCRIPTION	PART NO.
NH3 Canister Filter Auer 1045000L	AG-0251-00
NH3 Canister Filter Auer 88 1061703L	AG-0909-00
NH3 North Mask Full	AG-0251-01
Filter Particle 210-310 Sundstrom	AG-0254-00
NH3 Filter for Sundstrom SR100	AG-0985-00
Pre Filter for Sundstrom SR100	AG-0256-00



### EYE WASH & WATER STORAGE

STOCK DESCRIPTION	PART NO.
Eye Wash Bottle 220110 EW400	AG-0250-01
Water Bottle 22 Litre	AG-0699-00



### CARRY BOX

STOCK DESCRIPTION	PART NO.
Safety Carry Box - Fisher	AG-0247-00

### GLOVES

STOCK DESCRIPTION	PART NO.
Gloves for NH3	AG-0248-00
Riggers Gloves Cowhide – Large	223785I
Welding Gloves Lined - Red	300WAK



### REPLACEMENT PARTS

STOCK DESCRIPTION	PART NO.
Lens to suit full North face mask	AS222828
Lens flexiglass full mask Auer	AG-0817-00
Harness head straps Full mask Auer	AG-0816-00



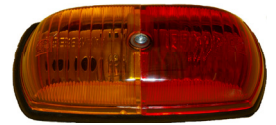
**FULL FACE GAS MASK**



**HALF FACE GAS MASK**

## LIGHT FITTINGS

STOCK DESCRIPTION	PART NO.
Combined Flasher Parking Lamp	IPL0402
Front End Outline Lamp	IPL0713
Rear End Outline Lamp	IPL0850
Stop Rear Position Licence Plate Lamp	IPL0404
Indicator Side Position Marker	IPL0417
Flasher Lamp	IPL0403
Stop / Indicator Lens	IPL0418
Indicator Lens Rectangular	IPL0834
Stop Lens Rectangular	IPL0835
Side Marker Lamp Red / Amber	IPL0401
Licence Plate Lamp	IPL0409
Stop / Indicator Rear Lamp	IPL0405
Stop Flasher Plate Combination	IPL0407
Stop Tail Licence Round	IPL0584
Stop Licence Plate Lens	IPL0412
Stop Round	IPL0714
Clear Lens	IPL1089
Combination Lamp	IPL1147
Combination Rear Lamp	IPL0430
Metal Plug 7 Pin	IPL0410
Metal Socket 7 Pin	IPL0411



# FILL SAFE CYLINDER SCALES



**MODEL**

**ACS5000**

**4KG - 9KG STAND FOR  
FILLING ON  
FORECOURTS OF  
SERVICE STATIONS**

**AS575  
LPG  
CYLINDER  
FILLING  
SYSTEM**

- ▶ Can be installed in all cylinder filling stations
- ▶ Faster fill times
- ▶ Accurate weighing
- ▶ No product wastage
- ▶ No over-filling

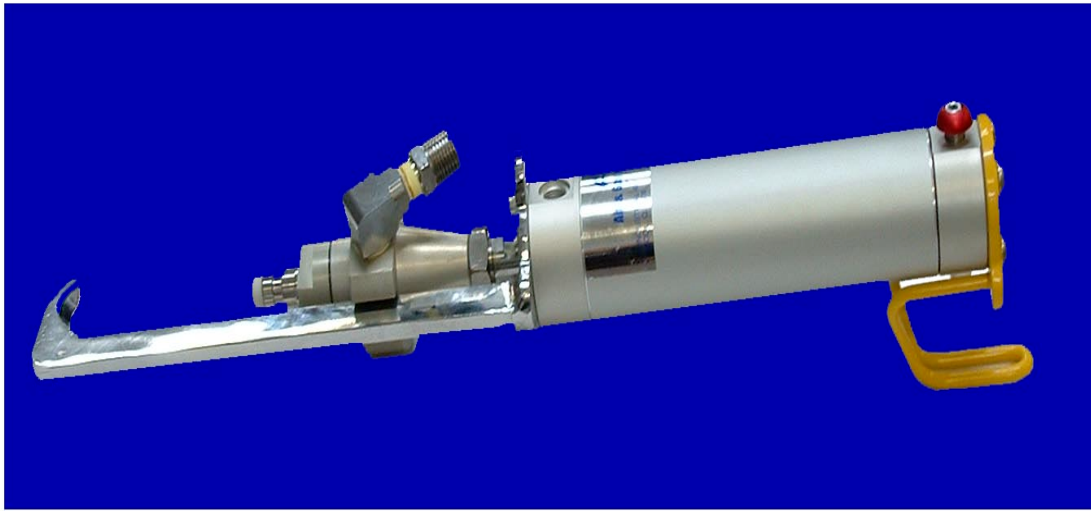
▶ Records:-

- Mass of LP Gas Supplied
- Total Of LP Gas Sale (\$)
- Price of LP Gas/Kg

**Air & Gas Industries**

19 Industrial Avenue, Wacol Qld 4076  
Ph: (07) 3271 5899 Fax: (07) 3271 5726  
Email: mail@airgas.com.au

# FILL SAFE CYLINDER SCALES



## MODEL AGI1116

- ▶ Quick acting fill operation
- ▶ Can be utilised to fill all POL valve cylinders and forklift cylinders
- ▶ Light weight design incorporating new and improved aluminium filling head
- ▶ In built, air operated robust trigger for single hand operation
- ▶ Safety guard to prevent accidental activation
- ▶ Interchangeability with existing cylinder filling systems
- ▶ Reduces cylinder filling time
- ▶ One nozzle for all filling applications
- ▶ Improved ergonomics, reducing operator fatigue
- ▶ Low maintenance
- ▶ 24 hour technical assistance

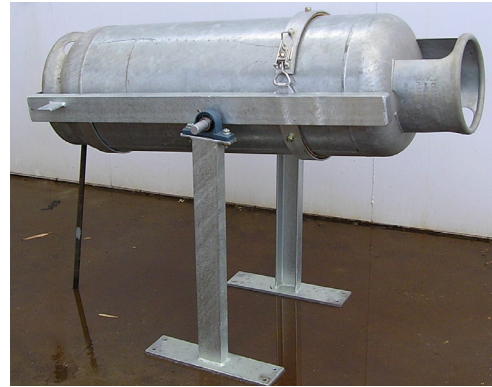
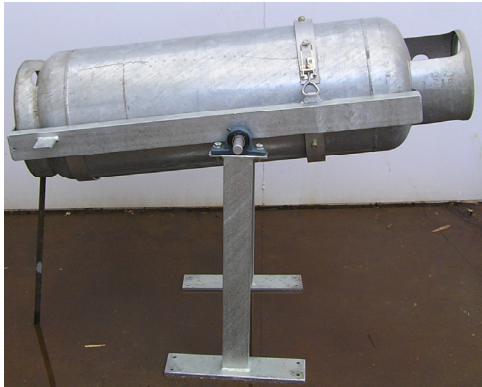


**Air & Gas Industries**

A Unit of Air & Gas Holdings Pty Ltd

# 45/18 KG CYLINDER INVERTER

## E3500 SERIES



- ▶ Can be utilised at all cylinder filling stations
- ▶ Rugged design & construction
- ▶ Simple to install
- ▶ Simple to use
- ▶ Multiple cylinder units
- ▶ Model to suit 9kg through to 190kg cylinders
- ▶ Cylinder fill systems available

---

**Air & Gas Industries**

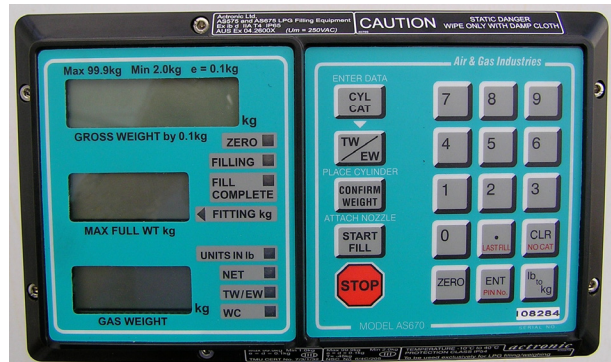
19 Industrial Avenue, Wacol Qld 4076  
Ph:(07) 3271 5899 Fax:(07) 3271 5726  
Email:mail@airgas.com.au



# FILL SAFE CYLINDER SCALES



## MODEL ACS1004



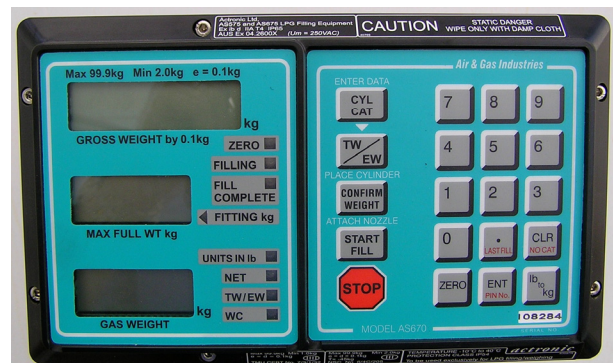
- Displays actual truck meter readings in real time
- Accurate to 1/10 of a gallon
- 300' range for all types of bulk transfer operations
- Rugged weather proof aluminium construction
- Intrinsically safe for hazardous products

- "Plug & Play" components for easy installation
- Available for all types of electronic & mechanical meter registers
- 2-year factory warranty and free tech support. Coast to coast sales, installation & service

# FILL SAFE CYLINDER SCALES



## MODEL ACS1009



- Can be installed in all cylinder filling stations
- Faster fill times
- Accurate weighing
- No product wastage
- No over-filling

### ► Records:-

- Number of filled cylinders
- Mass of LP Gas filled
- Mass of gas returned



# FILL SAFE CYLINDER SCALES



## MODEL ACS2000 WITH 9KG STAND

- ▶ Can be installed in all cylinder filling stations
- ▶ Faster fill times
- ▶ Accurate weighing
- ▶ No product wastage
- ▶ No over-filling

▶ Records:-

- Number of filled cylinders
- Mass of LP Gas filled
- Mass of gas returned

# PNEUMATIC CYLINDER DEVALVING / VALVING MACHINE



- ▶ Can be installed in all cylinder refill stations
- ▶ Rugged design & construction
- ▶ Simple to install
- ▶ Simple to use
- ▶ Multiple cylinder units
- ▶ Models to suit 4kg through to 45kg cylinders
- ▶ Single or multiple cylinder configurations